

## Shell Gas Supply and APA Gas Transport Contracts Awarded

### Highlights

- **Key Gas Supply and Transport contracts awarded to:**
  - **Shell for the supply of gas to the purification plant at the Beyondie SOP Project**
  - **APA for gas transportation services through the Goldfields Gas Pipeline (GGP) and associated metering stations for connection to the future Kalium owned gas pipeline**
- **These operational contracts are on budget and continue to confirm the BFS and FEED outcomes**
- **Approximately 50% of the FOB Cash Operating Costs for the Beyondie Sulphate of Potash Project have now been awarded between Shell, APA and Toll (haulage & logistics)**

Kalium Lakes Limited (Kalium Lakes) (ASX:KLL) has secured key contracts with well known, reputable organisations for the transportation and supply of gas to meet the requirements of its Beyondie Sulphate of Potash Project (BSOPP). These contracts will provide 1Tj of gas per day to produce 90ktpa of SOP per annum and also allows for expansion to support increased production and production of magnesium by-products.

Shell Energy Australia Pty Ltd (Shell) has been awarded the contract for supply of gas to the BSOPP site, which will be utilised for power generation, steam generation and product drying during operations.

APA Group's (ASX: APA) 88.2% owned Goldfields Gas Pipeline (GGP) will transport and deliver gas via a new, purpose built metering and connection facility. Early works has commenced with APA on the design of the new metering facility.

These contracts are subject to a Final Investment Decision (FID) and subsequent notice from Kalium Lakes that it is ready to commence commissioning and production operations.

Kalium Lakes' Chief Development Officer, Rudolph van Niekerk, commented: "The close proximity and ease of access to the GGP offers significant cost advantages to the BSOPP, which has allowed Kalium Lakes to own and operate its own gas pipeline, spur and gas fired power station with funding provided by the Northern Australia Infrastructure Facility (NAIF).

"Importantly, the award of the gas supply and gas transport operations contracts to Shell and APA are also within the budget allocated in the BFS and FEED outcomes. We can now also confirm that approximately 50% of our FOB cash Operating Costs have now been locked in, again on budget," he said.



**Shell Energy Australia Pty Ltd** combines local experience with global insights to deliver innovative energy products. Its initial offering is focused on natural gas and power for large Australian customers on both the east and west coasts.



**APA Group's** 15,000 kilometres of natural gas pipelines connect sources of supply and markets across mainland Australia. It operates and maintains networks connecting more than 1.4 million Australian homes and businesses to the benefits of natural gas.

\*\*\* ENDS \*\*\*

# Beyondie Sulphate Of Potash Project

## Developing Australia's First SOP Operation



**Final Investment Decision Mid 2019**

**Production 2020**

**First Mover Advantage**

- Kalium Lakes Limited (KLL.ASX)
- An ASX listed Sulphate Of Potash (SOP) developer
- 100% owned Beyondie Sulphate Of Potash Project (BSOPP)
- Located 160km south east of Newman, in Western Australia
- BSOPP Bankable Feasibility Study (BFS) completed September 2018
- Front End Engineering and Design (FEED) complete March 2019
- Early Works commenced – roads, communications, village
- Final Investment Decision (FID) anticipated in Mid 2019
- Binding Offtake Agreement with K+S, ~\$650M revenue over first 10 years
- KLL currently targeting initial production during 2020
- The BSOPP is on track to be the first SOP project developed in Australia
- Macquarie Capital (Australia), Morgans Financial Limited and BurnVoor Corporate Finance assisting with future capital requirements



**Strategic Location Close to Gas Pipeline, Sealed Roads and Ports**



**30 to 50 Year Initial Mine Life**

- **5.1Mt Ore Reserve**
- Initial Mine Life in excess of 30 years (up to 50 years)
- 19.6Mt Drainable Mineral Resource
- Compliant with both JORC 2012 and CIM standards
- **Australia's highest grade long life brine SOP deposit: 12.4 kg/m3 SOP**
- Lowest Impurity Levels: Na:K ratio of 8.8:1



**Approvals in Place**

- All Native Title Mining Agreements are in place
- Federal Environmental Approval Received
- State Environmental Protection Authority (EPA) Approval Received
- Mining Tenure Granted
- Gas Pipeline Licence Granted
- EPA and DMIRS early works approvals in place
- Other State Approvals in place to commence construction



**High Margins**

**No Production in Australia**

- No Current SOP Production in Australia – fully imported
- Phase 1 Start-up = 90ktpa SOP; Phase 2 = 180ktpa SOP
- Pre-production CAPEX of A\$216M (includes \$29M Contingency)
- Low All In Sustaining Operating Cost (AISC) ~US\$178-207 /t FOB
- Pre-Tax NPV<sub>8</sub> \$606M, IRR of 20.3% and +A\$3B LOM free cashflow
- Current SOP Sales prices ~US\$530/t
- **Low Cost, High Margin, Long Life Project**
- Premium Product Suite: >51% K<sub>2</sub>O, low Cl SOP products in granular, standard and soluble form
- Potential Upside – Magnesium, Salt, Carnegie SOPP JV
- **Low Cost Financing Identified** – NAIF (\$74M), KfW (\$102M) and Euler Hermes German Government Guarantee



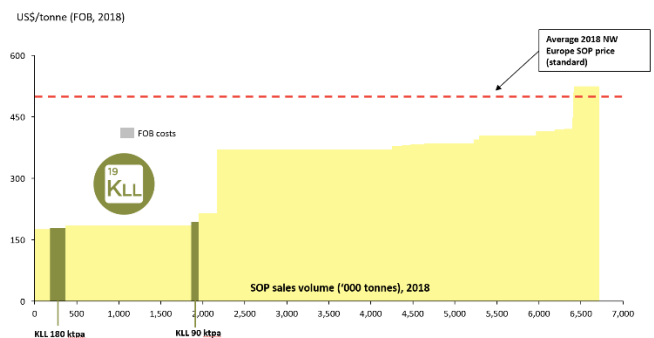
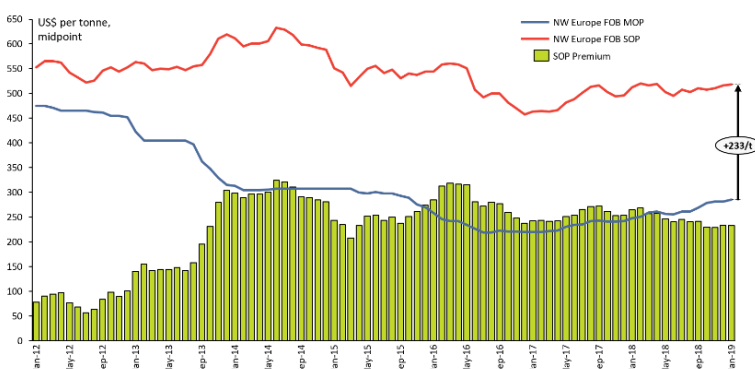
**Pilot Scale Trials Complete with More Than 10,000 Tonnes of Salts Produced**



**SOP Achieves a Premium Price of >US\$500/t due to the Low Chloride and High Sulphur Content**



**Kalium Lakes BSOPP will be One of the World's Lowest Cost Producers**



Copyright ©2019 Argus Media group. All rights reserved. Argus disclaims any and all liability related to or arising out of use of the extract above to the fullest extent permissible by law.

Copyright ©2019 Argus Media group. All rights reserved. Argus disclaims any and all liability related to or arising out of use of the extract above to the fullest extent permissible by law.

Source: Integer, Argus Media

Note: Costs refer to cash-operating items and excludes sustaining capital, and royalties

## Compliance Statement

The information in this document that relates Production Targets has been extracted from the ASX announcement(s) listed below.

- 17 September 2018: Bankable Feasibility Study Completed With Exceptional Financial Outcomes
- 4 March 2019: Lower Operating Cost and Increased Production For BSOPP (Front-End Engineering and Design (FEED) works)

The report(s) are available to be viewed on the website at: [www.kaliumlakes.com.au](http://www.kaliumlakes.com.au)

Kalium Lakes confirms that it is not aware of any new information or data that materially affects the information included in the original market announcements and, in the case of estimates of Mineral Resources, Ore Reserve Estimates, Exploration Targets or Production Targets, that all material assumptions and technical parameters underpinning the estimates in the relevant market announcement continue to apply and have not materially changed. The Company confirms that the form and context in which the Competent Person's findings are presented have not been materially modified from the original market announcement.

## Competent Persons Statement

The information in this ASX announcement and the accompanying Report that relates to Exploration Targets, Exploration Results, Mineral Resources and Ore Reserves is based on information compiled by Thomas Schicht, a Competent Person who is a Member of a 'Recognised Professional Organisation' (RPO), the European Federation of Geologists, and a registered "European Geologist" (Registration Number 1077) and Anke Penndorf, a Competent Person who is a Member of a RPO, the European Federation of Geologists, and a registered "European Geologist" (Registration Number 1152).

Thomas Schicht and Anke Penndorf are full-term employees of K-UTEC AG Salt Technologies (K-UTEC).

K-UTEC, Thomas Schicht and Anke Penndorf are not associates or affiliates of Kalium Lakes or any of its affiliates. K-UTEC will receive a fee for the preparation of the Report in accordance with normal professional consulting practices. This fee is not contingent on the conclusions of the Report and K-UTEC, Thomas Schicht and Anke Penndorf will receive no other benefit for the preparation of the Report. Thomas Schicht and Anke Penndorf do not have any pecuniary or other interests that could reasonably be regarded as capable of affecting their ability to provide an unbiased opinion in relation to the Beyondie Potash Project.

K-UTEC does not have, at the date of the Report, and has not had within the previous years, any shareholding in or other relationship with Kalium Lakes or the Beyondie Potash Project and consequently considers itself to be independent of Kalium Lakes.

Thomas Schicht and Anke Penndorf have sufficient experience that is relevant to the style of mineralisation and type of deposit under consideration and to the activity being undertaken to qualify as a Competent Person as defined in the 2012 Edition of the JORC 'Australasian Code for Reporting of Exploration Results, Mineral Resources and Ore Reserves'. Thomas Schicht and Anke Penndorf consent to the inclusion in the Report of the matters based on their information in the form and context in which it appears.

## Cautionary Statement Regarding Forward-Looking Information

Statements regarding plans with respect to the Company's mineral properties may contain forward looking statements. Statements in relation to future matters can only be made where the Company has a reasonable basis for making those statements. This announcement has been prepared in compliance with the current JORC Code 2012 Edition and the current ASX Listing Rules. The Company believes it has a reasonable basis for making the forward-looking statements, including any production targets, based on the information contained in the announcement and in particular the JORC 2012 and NI 43-101 Technical Report - Bankable Feasibility Study.

All statements, trend analysis and other information contained in this document relative to markets for Kalium Lakes, trends in resources, recoveries, production and anticipated expense levels, as well as other statements about anticipated future events or results constitute forward-looking statements. Forward-looking statements are often, but not always, identified by the use of words such as "seek", "anticipate", "believe", "plan", "estimate", "expect" and "intend" and statements that an event or result "may", "will", "should", "could" or "might" occur or be achieved and other similar expressions. Forward-looking statements are subject to business and economic risks and uncertainties and other factors that could cause actual results of operations to differ materially from those contained in the forward-looking statements. Forward-looking statements are based on estimates and opinions of management at the date the statements are made. Kalium Lakes does not undertake any obligation to update forward-looking statements even if circumstances or management's estimates or opinions should change. Investors should not place undue reliance on forward-looking statement

## Kalium Lakes Limited



ABN: 98 613 656 643  
ASX: KLL  
Ordinary Shares on Issue: 238,966,103



**Contact Details:**  
Kalium Lakes Limited  
Unit 1, 152 Balcatta Road  
BALCATT A WA 6021

PO Box 610  
BALCATT A WA 6914

Email: [info@kaliumlakes.com.au](mailto:info@kaliumlakes.com.au)  
Web: [www.kaliumlakes.com.au](http://www.kaliumlakes.com.au)

Tel: +61 (0)8 9240 3200



### Board of Directors:

Mal Randall	Non-Executive Chairman
Brett Hazelden	Managing Director
Rudolph van Niekerk	Executive Director
Stephen Dennis	Non-Executive Director

### Chief Financial Officer and Joint Company Secretary:

Christopher Achurch

### Joint Company Secretary:

Gareth Widger



### Share Registry

Computershare Investor Services Pty Ltd  
Level 11, 172 St Georges Terrace  
Perth, WA 6000  
Tel: (within Australia): 1300 850 505  
Tel: (outside Australia): +61 3 9415 4000